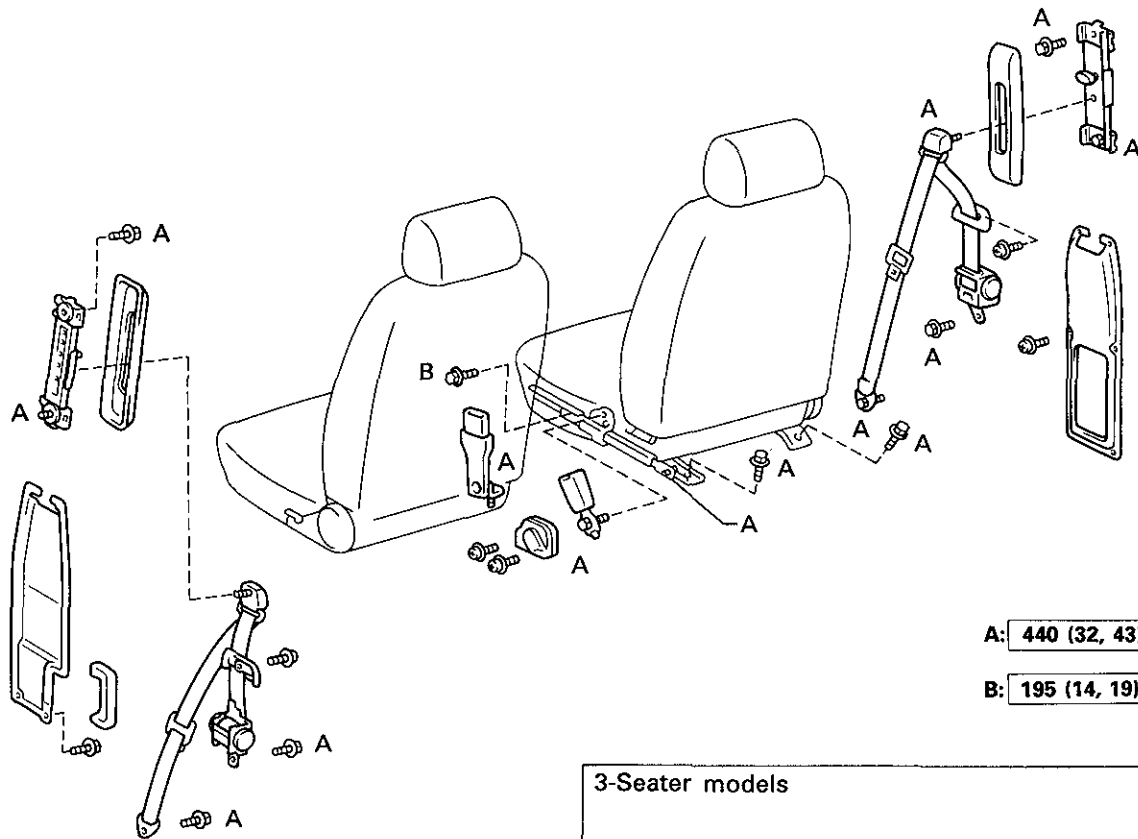


SEAT BELT COMPONENTS

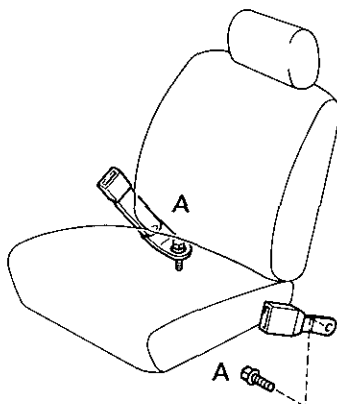
Front Seat Belt (RHD)



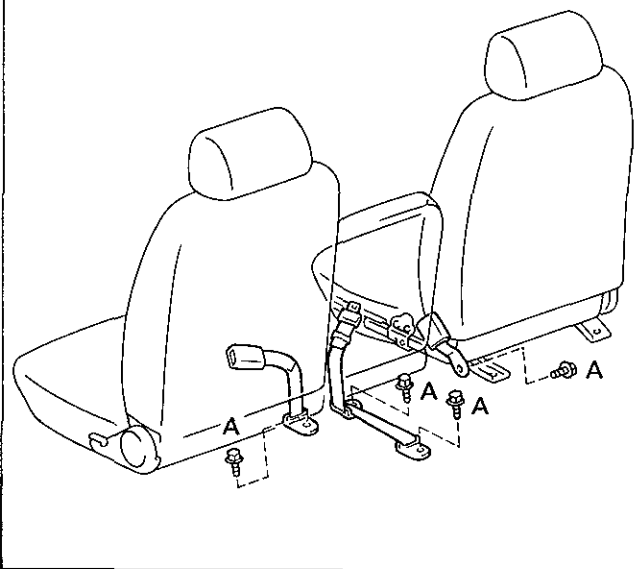
A: 440 (32, 43)

B: 195 (14, 19)

England (LH side seat belt)



3-Seater models

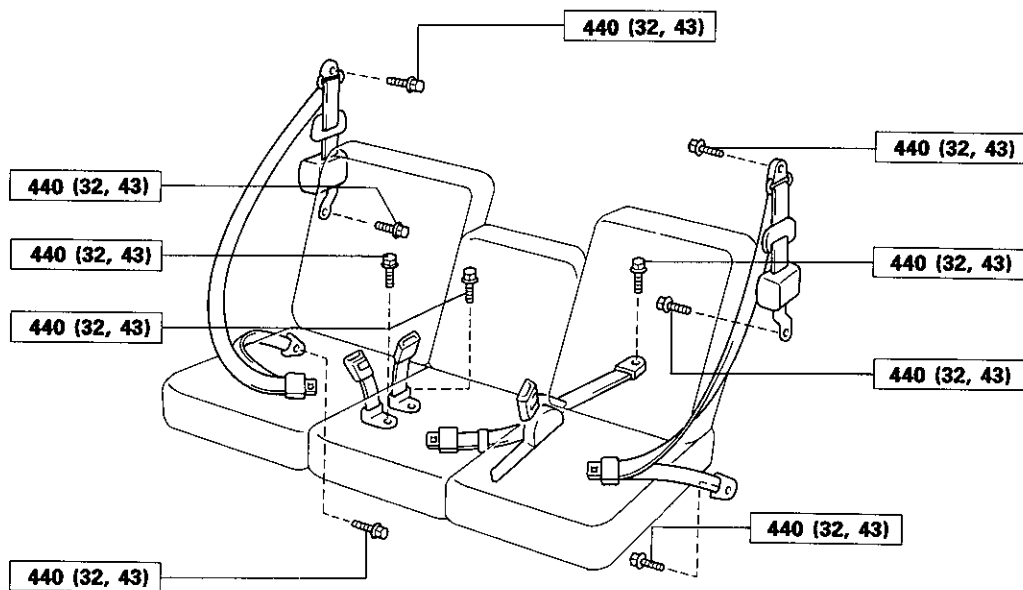


kg-cm (ft-lb, N-m) : Specified torque

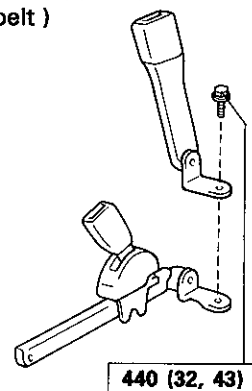
BO4759
BO4760
BO4761

COMPONENTS (Cont'd)

Front Seat Belt (LHD)



Australia
(RH side inner
belt)



kg-cm (ft-lb, N-m) : Specified torque

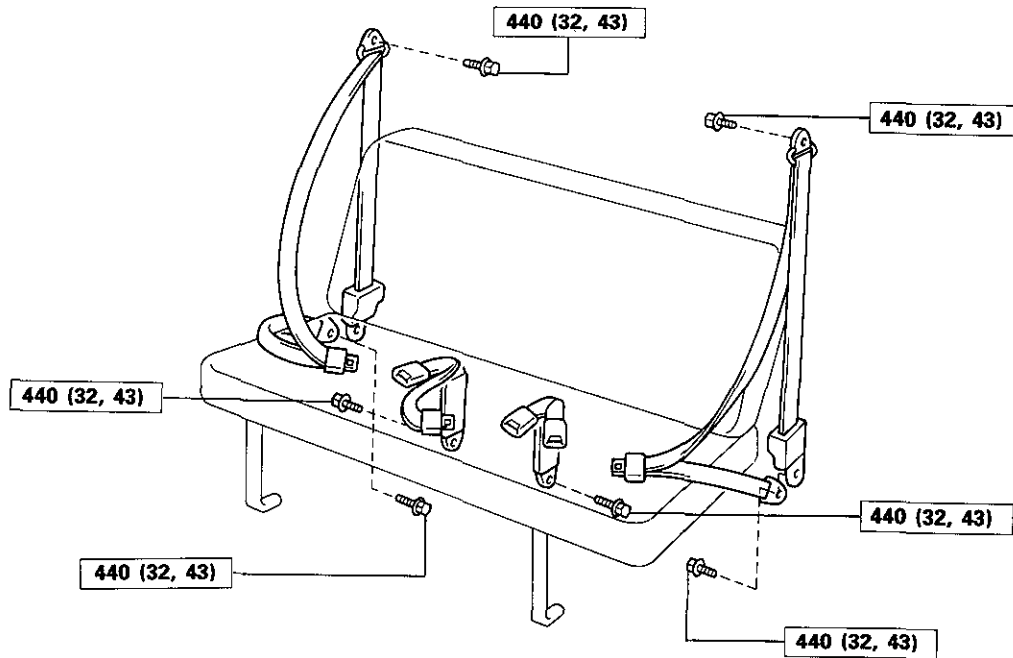
BO4715
BO4716

COMPONENTS (Cont'd)

VAN:

Rear No.1 Seat Belt

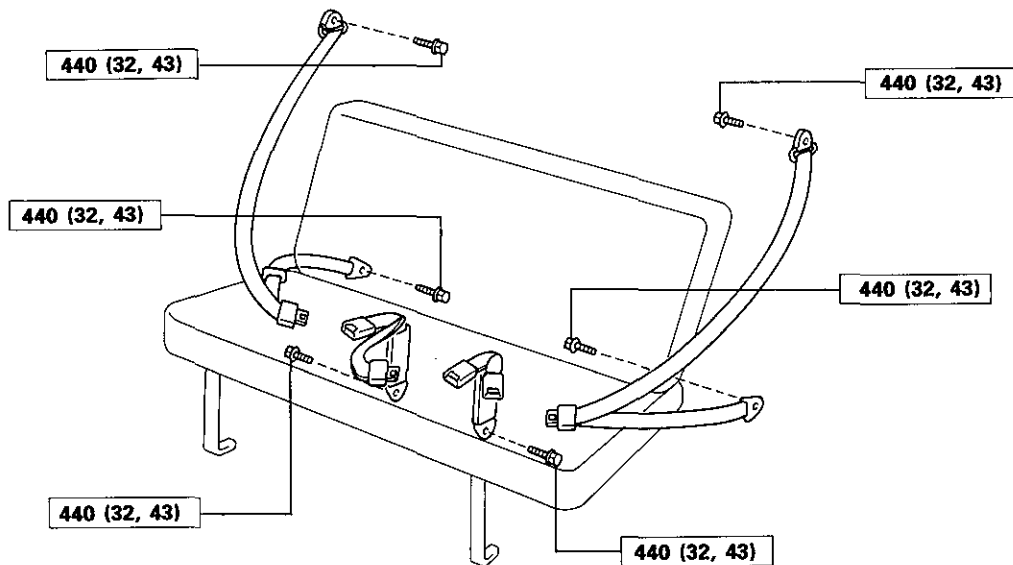
Australia 2/5-Seater models and Europe (Ex. Norway 3/6-Seater models)



VAN:

Rear No.1 Seat Belt

Australia 3/6-Seater models and New Zealand 3/6-Seater models



kg-cm (ft-lb, N-m) : Specified torque

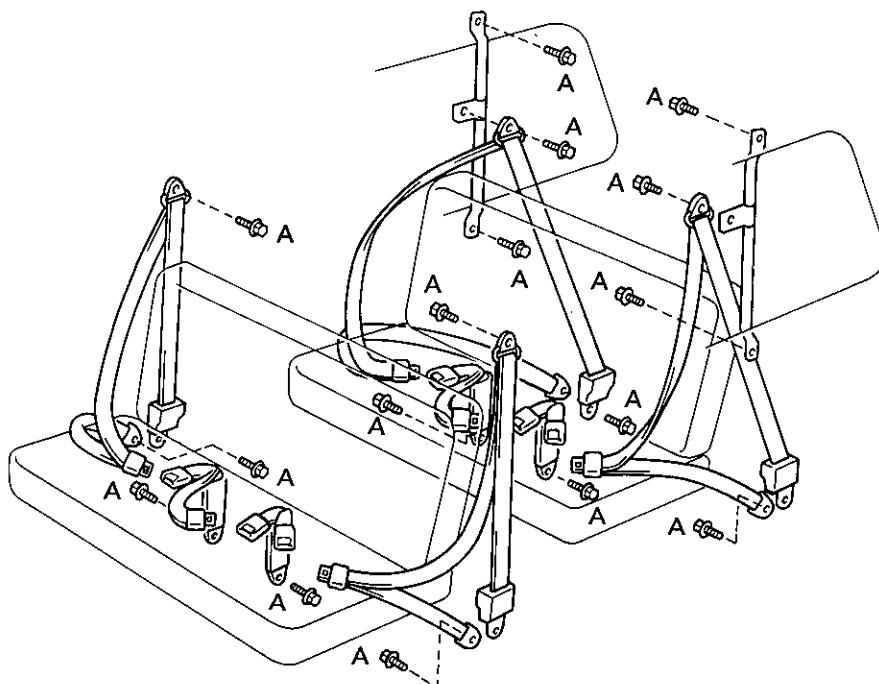
BO4717
BO4718

COMPONENTS (Cont'd)

VAN:

Rear No.1 and No.2 Seat Belt

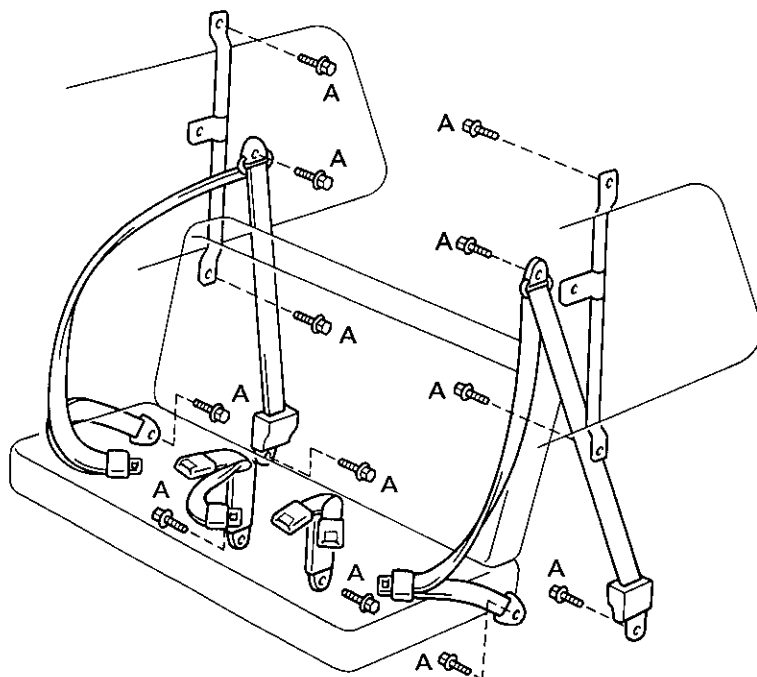
Europe (Ex. Norway) 4/9-Seater models



VAN:

Rear No.2 Seat Belt

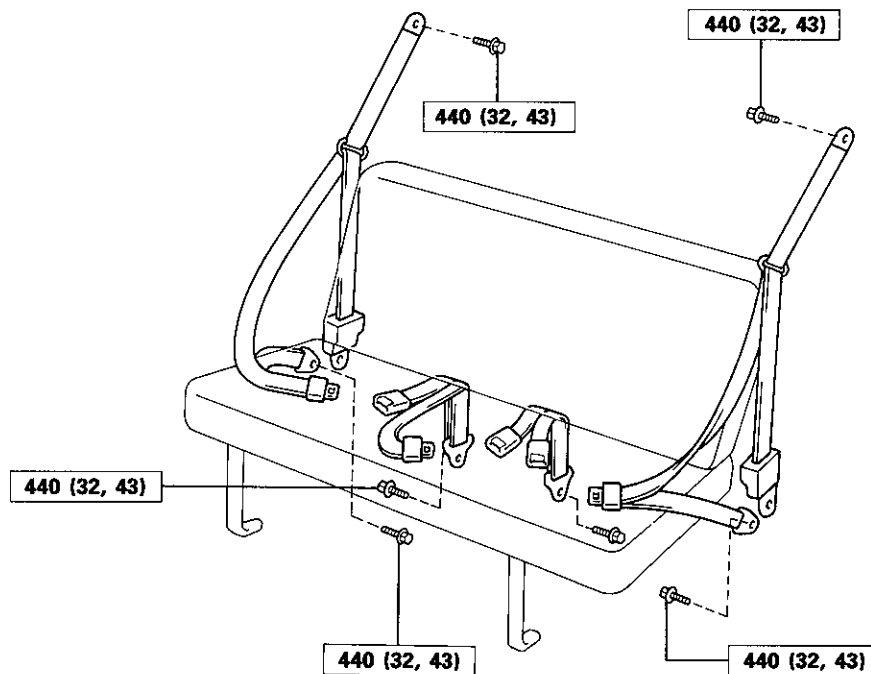
Europe (Ex. Norway) 6/5-Seater models

A: **440 (32, 43)**

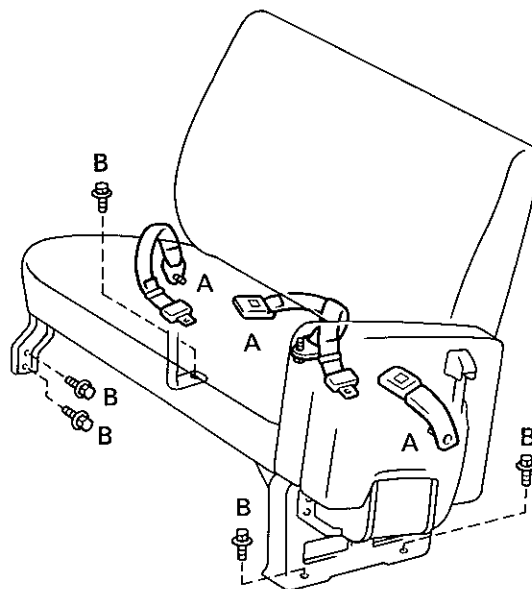
kg-cm (ft-lb, N-m) : Specified torque

COMPONENTS (Cont'd)

VAN:
Rear No.1 Seat Belt
Norway only



COMMUTER:
Rear No.1, No.2 and No.3 Seat Belt



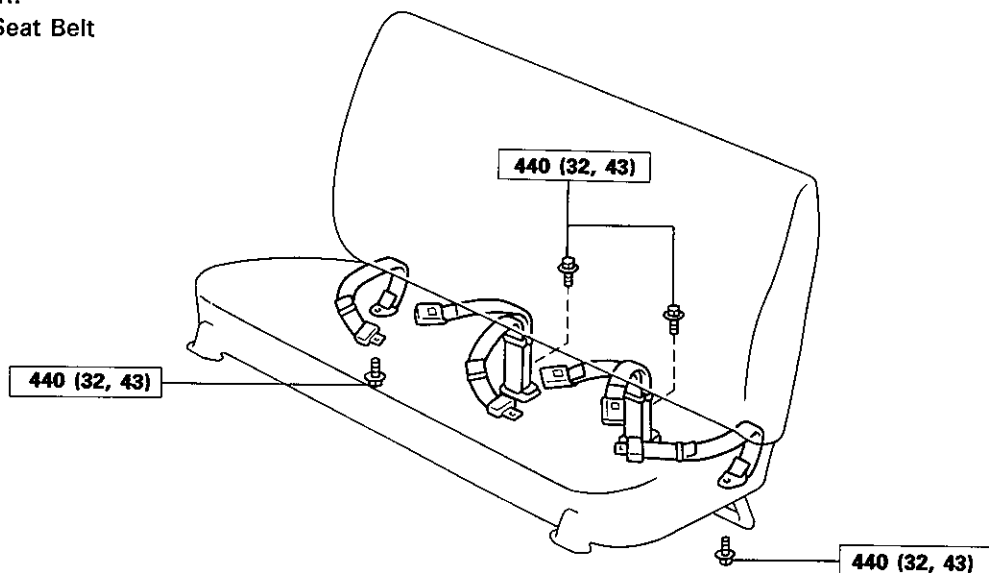
A: 440 (32, 43)

B: 400 (29, 39)

kg-cm (ft-lb, N-m) : Specified torque

COMPONENTS (Cont'd)

COMMUTER:
Rear No.4 Seat Belt
Commuter



kg-cm (ft-lb, N-m) : Specified torque

BO4763

SEAT BELT

[Emergency Locking Retractor (ELR) Type]

1. RUNNING TEST (IN SAFE AREA)

- Fasten the front seat belt.
- Drive the car at 10 mph (16 km/h) and make a very hard stop.
- Check that the belt is locked and cannot be extended at this time.

HINT: Conduct this test in a safe area. If the belt does not lock, remove the belt mechanism assembly and conduct the following static check. Also, whenever installing a new belt assembly, verify the proper operation before installation.

2. STATIC TEST

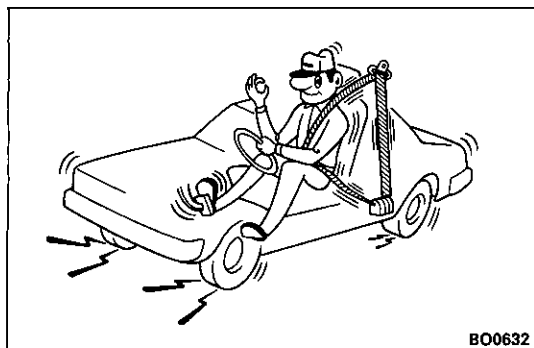
- Remove the locking retractor assembly.
- Tilt the retractor slowly.
- Verify that the belt can be pulled out at a tilt of 15 degrees or less, and cannot be pulled out at over 45 degrees of tilt.

If a problem is found, replace the assembly.

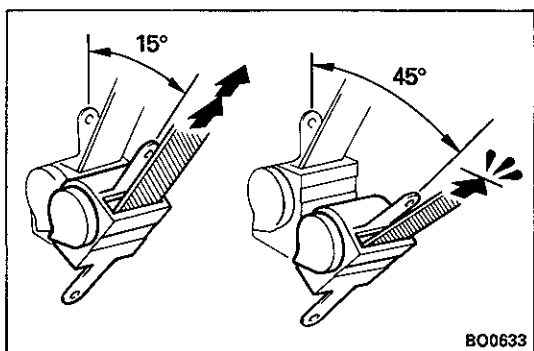
[Manual Type]

TESTING

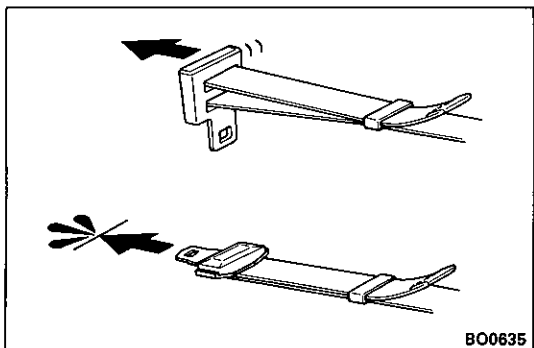
- Adjust the belt to the proper length.
- Apply a firm load to the belt.
- Verify that the belt does not extend.



BO0632



BO0633



BO0635